



*Jura Cottage interior*

## The Village

The small, friendly seaside village of Craobh Haven (pronounced 'croove', after the Gaelic for a small tree or shrub) nestles on the north shore of the Craignish peninsular opposite Shuna island, between Oban and Lochgilphead on Scotland's beautiful West Coast.

With some 40 houses in total, the village has always welcomed holidaymakers and visiting yachtsmen. It is the ideal spot to get away from your daily routine, where you can relax and enjoy the peace, spot wildlife, and watch the boats coming and going in the harbour.

Within the village, there is a shop offering general provisions, a gift and coffee shop, and The Lord of the Isles pub offering drinks and good restaurant meals. There is also a chandlery at the marina selling all manner of equipment and yachting supplies.

There are many things to do in and around the village including: boat trips among the numerous local islands; riding lessons, pony trekking and hacking; yacht and dinghy sailing; bird and sealife spotting; fishing and many spectacular walks and views.

## 2010 Weekly Rates

Period (Sat to Sat)	Jura (max 6)	Islay (max 4)
Jan 9 - Feb 6	570	520
Feb 13 - Mar 20	580	530
Mar 27, Apr 3, 10	630	580
April 17, 24	600	550
May 1 - 22	630	580
May 29	670	620
June 5 - 19	630	580
June 26	690	640
July 3 - Aug 28	750	700
September 4 - 18	670	620
Sep 25 - Oct 2	600	550
Oct 9 - 23	630	580
Oct 30 - Dec 11	580	530
<i>Festive Period</i>		
Christmas - (20) Dec	750	700
New Year - (27) Dec	770	720

**All rates are fully inclusive  
(linen, electricity, solid fuel)**

Short notice lets of less than a week are sometimes available (usually off season.)  
Phone for details.

*Craobh Haven Cottages are owned, cleaned and managed by  
Alison Hampton and Matthew Haggis*

# CRAOBH HAVEN COTTAGES



VisitScotland Quality Assured  
**'Four Star Self Catering'**  
ASSC Approved Member

Craobh Haven Cottages  
Craobh Haven  
by Lochgilphead  
Argyll

Tel: 0131 661 2783  
Fax: 08700 528629

2010@craobhcottages.co.uk  
[www.craobhcottages.co.uk](http://www.craobhcottages.co.uk)

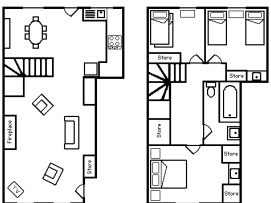
## The Cottages

Situated right by the seashore, Craobh Haven Cottages combine the warmth and comfort of home with wonderful, unspoilt views of the sea and islands.

Traditionally built for local character and charm, both cottages have timber beams and an open fireplace built with local stone. They are fitted and furnished to an award-winning standard throughout, including high quality living room suites and kitchen appliances. The open-plan downstairs has a west-facing sitting area with the open fire, flat-screen digital TV (Freeview channels), video/DVD player, CD/cassette player, telephone and **WiFi internet connectivity**. The kitchen and dining areas are to the rear. Upstairs each has a master bedroom with king-sized (5ft) bed and fitted wash basin, and a twin bedded room (all with electric blankets). The bathrooms have a bath with electric shower, washbasin and WC. Jura's third bedroom has twin full-size bunk beds without electric blankets. Bath and hand towels, duvets with covers, sheets and pillowcases, teatowels and a hairdryer are all provided. Access to a telephone point, and a cot (without linen) and highchair are available if required.

In the kitchen we provide a range of high quality equipment, including crockery, cutlery, pots, pans, dishes and utensils. There is also a dishwasher, large fridge/freezer, automatic washing machine and tumble drier, microwave oven, electric oven and hob, kettle, food processor, toaster and filter coffee machine.

The cottages have electric panel heaters in every room. Coal for the open fire, and all electricity, is provided at no extra cost. The cottages are strictly **No Smoking**. Well behaved pets are welcome, but are required to be kept downstairs.



Jura Cottage

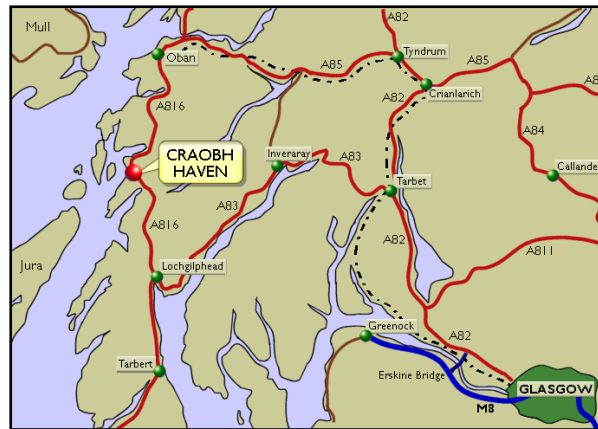


Islay Cottage

## The Local Area

Argyll has a huge range of things to do, sights to see and places to go: the spectacle of busy fishing and yachting centres like Crinan and Tarbert; the shops, cafes and local activity of towns such as Oban and Lochgilphead; many beautiful hill and coastal walks, the education and entertainment to be had at places like the Rare Breeds Farm, the Sealife Centre and Cruachan Power Station; the many fine restaurants serving locally caught seafood. Come rain or shine, you should be able to find so many things to do that you have to come back next year to complete the list!

Extensive information on local activities and visitor attractions are provided in a special information folder in each cottage and via our website.



Craobh Haven is just over two hours from Glasgow via the A82 and A83, about 17 miles north of Lochgilphead on the A816.

The nearest railway station is about 20 miles north, in Oban, which is also the ferry port for trips to Mull and the Islands.

For more information and photos, visit our website:

[www.craobhcottages.co.uk](http://www.craobhcottages.co.uk)

## Booking Form

Please complete and return with your deposit (cheques payable to 'Craobh Haven Cottages') to:

Craobh Haven Cottages  
17, Brunton Terrace, Edinburgh EH7 5EH  
Tel: 0131 661 2783  
Fax: 08700 528629

Please reserve the following week(s):

Sat \_\_\_\_\_ to Sat \_\_\_\_\_

JURA Cottage (max SIX persons)

ISLAY Cottage (max FOUR persons)

Total number in party:

Dogs/Pets @ £10 each/week

We require WiFi @ £5

Cot

Highchair

Estimated time of arrival:

(Earliest arrival 4pm, cottage to be vacated by 10am on departure.)

I enclose £ \_\_\_\_\_ as a 25% deposit.  
(Balance of payment due one month prior to arrival.)

Signed:

Name \_\_\_\_\_

Address \_\_\_\_\_

Telephone No. \_\_\_\_\_

Email \_\_\_\_\_